

### **Eclipse pumps represent a dramatic advance in pump technology.**

Combining proven design principles with state-of-the-art engineered composites; it is the most reliable, simple, and intuitive pump on the market today. Service only takes minutes, thus reducing process downtime and maintenance costs. It is commonly used for applications in industries such as chemical processing, petrochemical, and water treatment.



#### **Applications**

sodium hypochlorite, bleaches, pH control, odor control, acids, caustics



#### **Flow**

up to 7.4 gpm (28 lpm)



#### **Pressure**

up to 150 psi (10 bar)



#### **Temperature**

up to 200°F (93°C)\*

\*with deration



## Features & Benefits

- Non-metallic construction
- No mechanical seals are needed because magnetically driven, engineered composite housings and gears are used
- Close coupled mounting eliminates the cost and potential issues associated with pump and motor alignment
- Bi-directional and mounting in 45° increments
- Easy maintenance KOPkit<sup>®</sup> (Keep on Pumping kit) saves time and money

#### **Zero Leakage**

- Fully encapsulated magnets
- Engineered composite fluoropolymer provides superior chemical resistance
- Zero emissions of hazardous or regulated chemicals

#### **Built for the harshest environments**

- Ideal fit for many medium to highly corrosive liquids

#### **Front pull-out design**

- Quick and easy service
- Piping and electrical stay intact
- Simplified orders and inventory
- Reduced downtime
- More production

#### **Controls**

- Pulsafeeder RV Controller: Intelligent Motor Speed

## Specifications

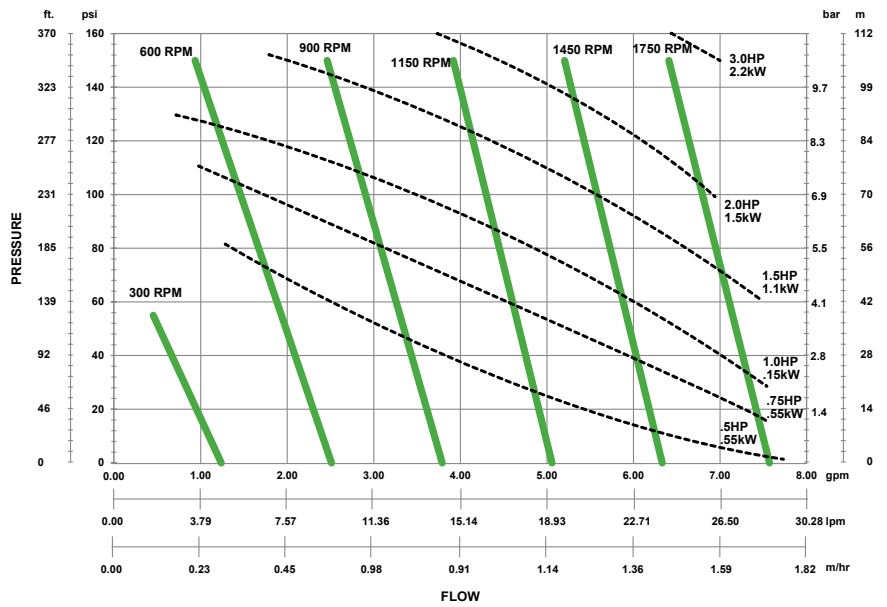
Gear type	External spur gear
Bearing type	Sleeve bearing, integral wear plate
Max pressure	150 psi (10 bar)
Max flow	6.5 gpm (24.6 lpm)
Max temp	up to 200°F (93°C)*
Min temp	-40°F (-40°C)
Motor size	NEMA 56C, 143/145TC, IEC 63 and 80 B3/B14
Standards	NSF, ATEX, CE

\*with deration

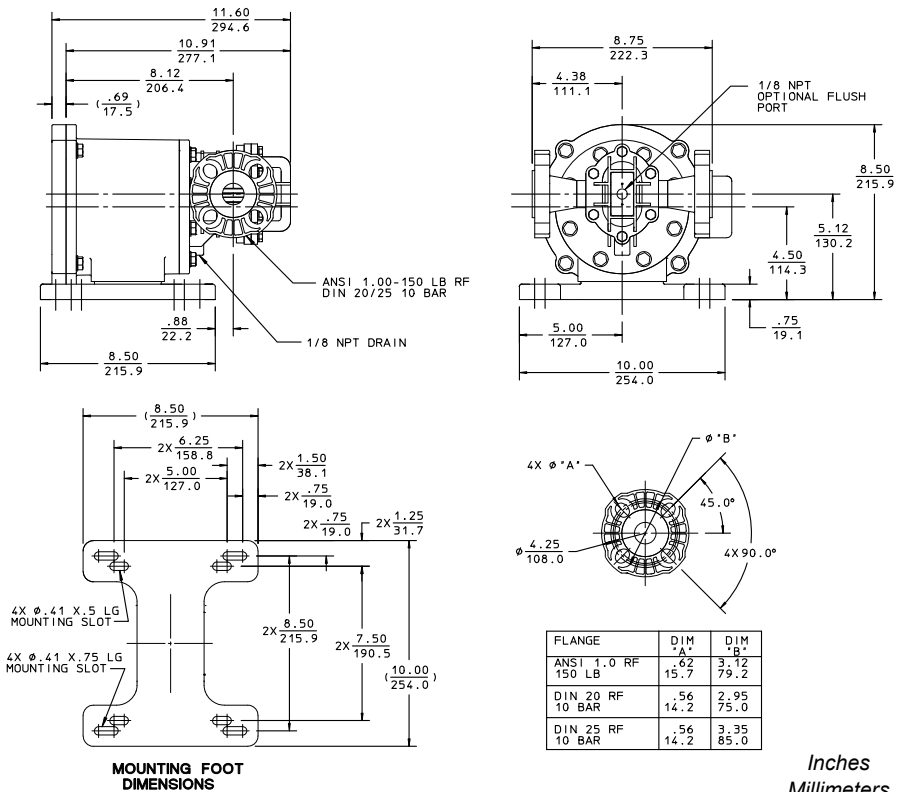
## Materials of Construction

Housing	PVDF
Magnet	Neodymium encapsulated in virgin PTFE
Gear & Liner	Carbon reinforced PTFE
Shafts	Alumina Ceramic
Bearings	Carbon Graphite or Graphite-impregnated Silicon carbide
O-rings	PTFE

## Performance (1 cPs)



## Dimensions



Inches  
Millimeters

The dimensions shown may differ depending on pump configuration.

**For More Information, Contact Your Authorized Pulsafeeder Engineered Products Distributor**

**Pulsafeeder, Inc.**  
2883 Brighton Henrietta Town Line Rd.  
Rochester, NY 14623  
Phone: +1 (585) 292-8000  
pulsa@idexcorp.com • pulsa.com

Pulsafeeder is an ISO 9001:2008 and 14001:2004 certified company.

© Copyright 2014 Pulsafeeder. All rights reserved.



**IDEX**  
FLUID & METERING