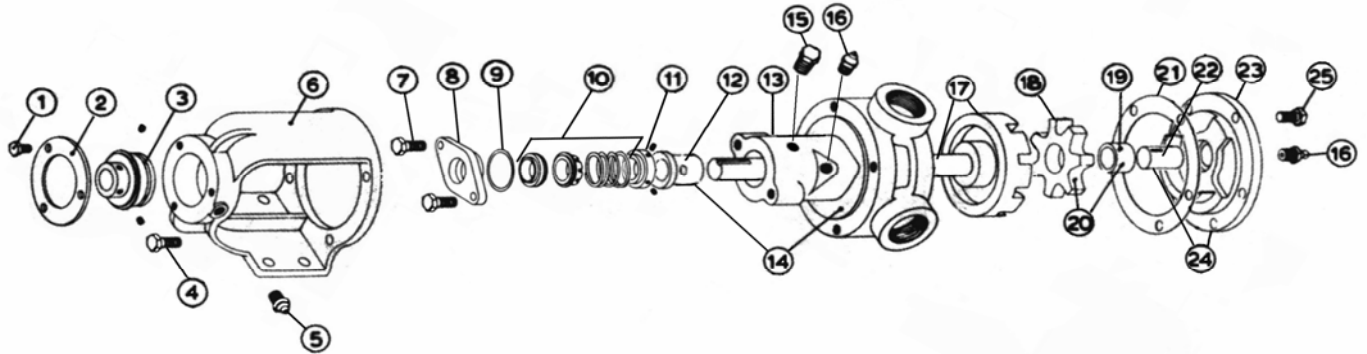


**MODEL G-115 & GX2-115 with Mechanical Seal**

Subject to change without notice  
 F.O.B. Factory

Supercedes all previous parts lists



ITEM	DESCRIPTION	MATERIAL	PART NUMBER	QTY	PRICE
1	Bearing Retainer Bolts	1/4-28X1/2 HEX CAP SCREW GR5	355-00-012-670	4	
2	Bearing Retainer	Alluminum	145-02-050-010	1	
3	Ball Bearing	Steel	150-00-050-605	1	
4	Bracket Bolt	1/4-20X3/4 HEX CAP SCREW GR5	355-00-015-670	4	
5	Grease Fitting	1/8 NPT STR GRS FTNG	325-00-025-605	1	
6	Bracket	Iron	165-02-005-310	1	
7	Seal Seat Retainer Fasteners	5/16-24X3/4 HEX CAP SCREW GR5	355-00-038-670	2	
		Lock washer	355-00-529-660	2	
8	Seal Seat Retainer	Iron	470-02-008-310	1	
		Steel - PTFE Seal Only	470-02-024-620	1	
9	Seal Seat Retainer Oring	Buna	360-00-500-120	1	
10	Mechanical Seal Ass'y	Buna / Carbon vs Ni-Resist / SS BF-871	335-00-020-243	1	
		Viton / Carbon vs Ni-Resist / SS XP-171	335-00-020-250	1	
		PTFE / Carbon vs Ni-Resist / SS QP171	335-00-040-204	1	
11	Driving Ring	Steel	330-00-025-620	1	
12	Casing Bushing	Bronze	175-02-040-050	1	
		Carbon	175-02-040-140	1	
13	Casing - G-115 3/4" NPT 90° Ports	Iron (Buna or Viton Seal Only)	190-02-115-310	1	
		Iron (PTFE Seal Only)	190-02-120-310	1	
	Casing GX2-115 1" 180° Ports	Iron (Buna or Viton Seal Only)	190-02-150-310	1	
		Iron (PTFE Seal Only)	190-02-155-310	1	
14	Casing and Bushing Ass'y G-115	Iron / Bronze (Buna or Viton Seal Only)	185-03-110-330	1	
		Iron / Carbon (Buna or Viton Seal Only)	185-03-110-332	1	
		Iron / Bronze (PTFE Seal Only)	185-03-120-330	1	
		Iron / Carbon (PTFE Seal Only)	185-03-120-332	1	
	Casing and Bushing Assy GX2-115	Iron / Bronze (Buna or Viton Seal Only)	185-03-150-330	1	
		Iron / Carbon (Buna or Viton Seal Only)	185-03-150-332	1	
		Iron / Bronze (PTFE Seal Only)	Consult Factory	1	
		Iron / Carbon (PTFE Seal Only)	Consult Factory	1	
15	Pipe Plug	Steel	325-00-075-605	1	
16	Grease Fitting	Steel	325-00-075-605	2	
17	Rotor and Shaft Ass'y	Ductalloy / Steel	455-03-014-139	1	
18	Idler	Iron	2-417-001-353-40	1	
19	Idler Bushing	Bronze	2-091-005-454-02	1	
		Carbon	2-091-003-880-02	1	
20	Idler and Bushing ass'y	Iron / Bronze	285-03-040-330	1	
		Iron / Carbon	285-03-040-332	1	
21	Head Gasket	Standard	245-00-036-240	2	
22	Idler Pin	Steel - Solid	295-00-030-690	1	
23	Head	Iron - Plain	265-02-010-310	1	
		Iron - Relief Valve	2-366-002-100-00	1	
24	Head and Idler Pin Ass'y	Iron - Plain / Steel Solid	270-03-010-350	1	
		Iron - Relief Valve / Steel Solid	270-03-020-350	1	
25	Head Bolts	Steel - Plain Head	355-00-213-660	6	
		Steel - Relief Valve Head	355-00-035-670	6	