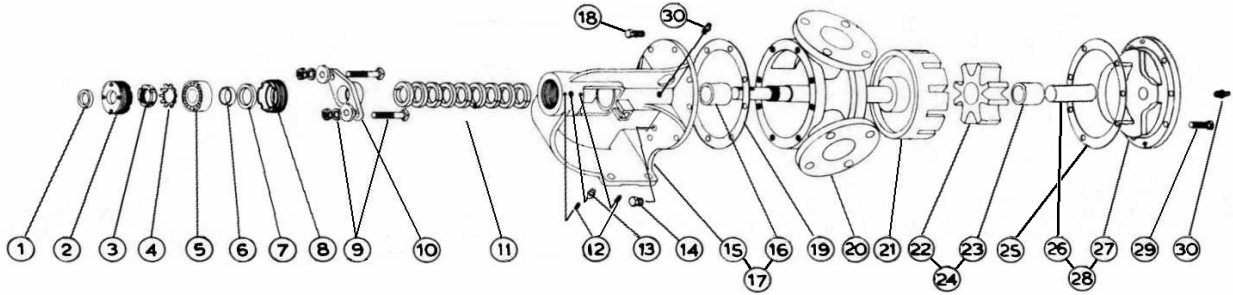


MODEL K-124 with Packing

Subject to change without notice
 F.O.B. Factory

Supersedes all previous parts lists



| ITEM | DESCRIPTION | MATERIAL | PART NUMBER | QTY | PRICE |
|------|---------------------------|---|------------------------------|----------------|-------|
| 1 | Outer Lip Seal | Buna | 195-00-175-120 | 1 | |
| 2 | Adjusting Nut | Iron | 100-02-100-310 | 1 | |
| 3 | Locknut | Steel - Locknut N07 | 355-00-558-605 | 1 | |
| 4 | Lockwasher | Steel - Lockwasher W07 | 355-00-550-605 | 1 | |
| 5 | Ball bearing | Steel | 2-055-021-375-00 | 1 | |
| 6 | Bearing Spacer | Steel | 490-00-100-605 | 1 | |
| 7 | Inner Lip Seal | Buna | 195-00-150-120 | 1 | |
| 8 | Adjusting Nut | Iron | 100-02-100-310 | 1 | |
| 9 | Packing Gland Fasteners | 3/8-16X3 Carriage Bolt Full Thrd Pl | 355-00-384-660 | 2 | |
| | | 3/8"Flat Washer - Steel | 355-00-496-660 | 2 | |
| | | 3/8" Lockwasher - Steel | 355-00-532-660 | 2 | |
| | | 3/8-16 Heavy Hex Nut - Steel | 355-00-583-660 | 2 | |
| 10 | Packing Gland | Iron - One Piece | 370-02-090-310 | 1 | |
| | | Iron - Split | 3-524-008-48N-00 | 1 | |
| 11 | Packing Set | Standard - Up to 500 F- C1065 | 365-00-400-780 | 1 | |
| | | Food Grade - Not Certified - C1045 | 365-00-400-750 | 1 | |
| | | High Temperature - Up to 800 F - 1625GF | 365-00-400-280 | 1 | |
| 12 | Adjusting Nut Set Screw | 1/4-28X5/16Cone Point SS Screw | 355-00-280-660 | 2 | |
| 13 | Grease Fitting | 1/4-28 45 Deg. Grease Fitting | 325-00-100-605 | 1 | |
| 14 | Pipe Plug | Steel - 1/4-18 Hex Head Plug | 390-00-125-605 | 3 | |
| 15 | Bracket | Iron | 165-02-085-310 | 1 | |
| 16 | Bracket Bushing | Bronze | 175-02-140-050 | 1 | |
| | | Carbon | 175-02-140-140 | 1 | |
| 17 | Bracket and Bushing Ass'y | Iron / Bronze | 170-03-085-329 | 1 | |
| | | Iron / Carbon | 170-03-085-332 | 1 | |
| 18 | Casing Bolt | 7/16-14X7/8 Hex Cap Screw GR5 | 355-00-082-670 | 8 | |
| 19 | Casing Gasket | Standard | 245-00-050-240 | 1 | |
| 20 | Casing | Iron | 190-02-440-310 | 1 | |
| 21 | Rotor and Shaft Ass'y | Iron / Steel | 455-03-412-349 | 1 | |
| | | Ductalloy / Iron | 455-03-412-139 | 1 | |
| 22 | Idler Gear | Iron | 2-420-200-100-50 | 1 | |
| 23 | Idler Bushing | Bronze | 2-108-007-454-04 | 1 | |
| | | Carbon | 2-108-014-880-04 | 1 | |
| 24 | Idler and Bushing Ass'y | Iron / Bronze | 285-03-200-330 | 1 | |
| | | Iron / Carbon | 285-03-200-332 | 1 | |
| 25 | Head Gasket | Standard | 245-00-050-240 | 3 | |
| 26 | Idler Pin | Steel - Greasable | 295-00-110-690 | 1 | |
| | | Steel - Non-Greasable | 295-00-130-690 | 1 | |
| | | Nitralloy - Greasable | 2-435-011-321-00 | 1 | |
| | | Nitralloy - Non-Greasable | 295-00-130-400 | 1 | |
| 27 | Head | Iron - Plain | 2-380-206-100-00 | 1 | |
| | | Iron - Relief Valve | 265-02-270-310 | 1 | |
| 28 | Head and Idler Pin Ass'y | Plain / Steel Greasable | 270-03-260-350 | 1 | |
| | | Plain / Steel non-Greasable | 270-03-265-350 | 1 | |
| | | Relief Valve / Steel Greasable | 270-03-270-350 | 1 | |
| | | Relief Valve / Steel Non-Greasable | 270-03-275-350 | 1 | |
| | | Plain / Nitralloy Greasable | 270-03-260-335 | 1 | |
| | | Plain / Nitralloy Non-Greasable | 270-03-265-335 | 1 | |
| | | Relief Valve / Nitralloy Greasable | 270-03-270-335 | 1 | |
| | | Relief Valve / Nitralloy Non-Greasable | 270-03-275-335 | 1 | |
| 29 | Head Bolts | Plain Head | 7/16-14X7/8 Hex Cap Screw | 355-00-082-670 | 6 |
| | | Relief Valve | 7/16-14X1 Hex Cap Screw GR5 | 355-00-085-670 | 4 |
| | | | 7/16-14X7/8 Socket Cap Screw | 355-00-234-660 | 2 |
| 30 | Grease Fitting | 1/8NPT Straight w/cap Grease Fitting | 325-00-050-605 | 2 | |