

VIKING GENERAL PURPOSE JACKETED UNMOUNTED PUMP

BULLETIN: EVD-KK230P-V

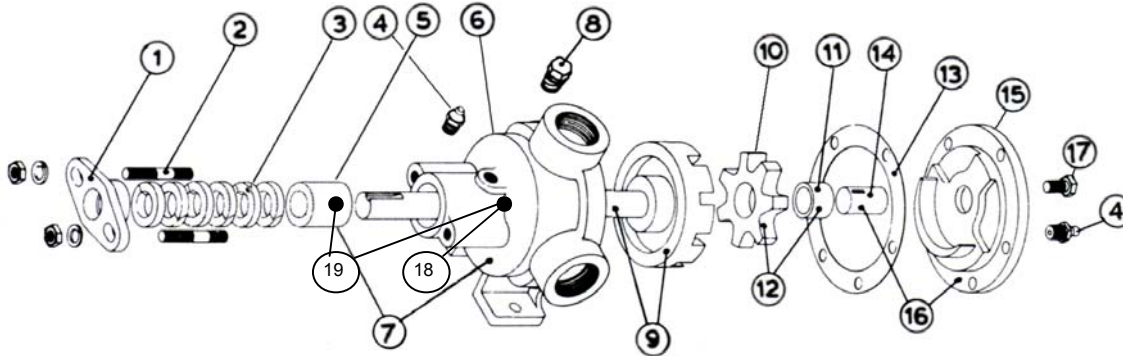
PAGE: 1

EFFECTIVE: 11/2015

MODEL KK-230 with Packing

Subject to change without notice
F.O.B. Windsor, Ontario

Supersedes all previous parts lists



ITEM	DESCRIPTION	MATERIAL	PART NUMBER	QTY	PRICE
1	Packing Gland Fasteners	5/16-18X2 T1/2 N1 Stud	355-00-414-620	2	
		5/16 Flat Washer	355-00-493-660	2	
		5/16 Lockwasher	355-00-529-660	2	
		5/16-18 Heavy Hex Nut	355-00-575-660	2	
2	Packing Gland	Iron	370-02-070-310	1	
3	Packing Set	Standard - Up To 500 Deg F - C1065	365-00-525-780	1	
		High Temperature - 1625GF	365-00-525-280	1	
4	Grease Fitting	Steel	325-00-025-605	2	
5	Casing Bushing	Bronze	175-02-130-050	1	
		Carbon	2-109-003-880-02	1	
6	Casing	Iron - Jacketed - For Non-Jacketed RBS	190-02-565-310	1	
		Iron - Jacketed - For Jacketed RBS	190-02-567-310	1	
7	Casing and Bushing Ass'y	Iron - Jacketed / Bronze - For Non-Jacketed RBS	Consult Factory	1	
		Iron - Jacketed / Carbon - For Non-Jacketed RBS	Consult Factory	1	
		Iron - Jacketed / Bronze - For Jacketed RBS	Consult Factory	1	
		Iron - Jacketed / Carbon - For Jacketed RBS	Consult Factory	1	
8	Pipe Plug	1/4-18 Hex Head	390-00-125-605	1	
9	Rotor and Shaft Ass'y	Iron / Steel	455-03-470-349	1	
		Ductalloy / Steel	455-03-470-139	1	
10	Idler	Iro	2-420-400-100-50	1	
11	Idler Bushing	Bronze	2-108-009-454-04	1	
		Carbon	2-108-015-880-04	1	
12	Idler and Bushing ass'y	Iron / Bronze	285-03-230-330	1	
		Iron / Carbon	285-03-230-332	1	
13	Head Gasket	Standard	245-00-050-240	3	
14	Idler Pin	Steel - Greasable	2-435-012-291-00	1	
		Steel Non-greasable	295-00-160-690	1	
15	Head	Iron - Non-Jacketed - Plain Head	2-380-405-100-00	1	
		Iron - Jacketed - Plain Head	265-02-360-310	1	
		Iron - Non-Jacketed - Relief Valve Style	2-381-414-100-00	1	
16	Head and Idler Pin Ass'y	Iron - Non-Jacketed - Plain / Steel - Greasable	270-03-330-350	1	
		Iron - Non-Jacketed - Relief Valve Style / Steel - Greasable	270-03-340-350	1	
		Iron - Plain / Steel - Non-greasable	270-03-335-350	1	
		Iron - Relief Valve / Steel - Non-greasable	270-03-345-350	1	
		Iron - Jacketed - Plain / Steel - Greasable	270-03-360-350	1	
17	Head Bolts	Plain Head 7/16-14x7/8 Hex Cap Screw Grade 5	355-00-082-670	6	
		Relief Valve Head 7/16-14x1 Hex Cap Screw Grade 5	355-00-085-670	4	
		7/16-14x7/8 Socket Head Cap Screw	355-00-234-660	2	
18	Jacketed Rotor Bearing Sleeve	Iron	2-585-020-100-00	1	
19	Jacketed Rotor Bearing Sleeve and Bushing Ass'y	Iron / Bronze	450-03-010-330	1	
		Iron / Carbon	450-03-010-332	1	