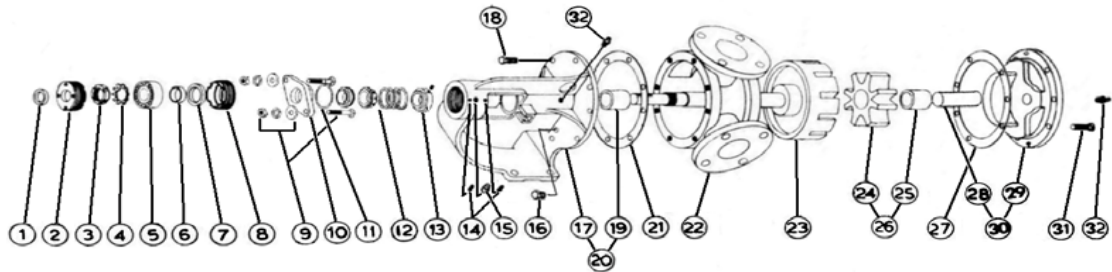


MODEL LL-124 with Mechanical Seal

Subject to change without notice
 F.O.B. Factory

Supercedes all previous parts lists



ITEM	DESCRIPTION	MATERIAL	PART NUMBER	QTY	PRICE
1	Outer Lip Seal	Buna	195-00-175-120	1	
2	Adjusting Nut	Iron	100-02-100-310	1	
3	Locknut	Steel - Locknut N07	355-00-558-605	1	
4	Lockwasher	Lockwasher W07	355-00-550-605	1	
5	Ball bearing	Steel	2-055-021-375-00	1	
6	Bearing Spacer	Steel	490-00-100-605	1	
7	Inner Lip Seal	Buna	195-00-150-120	1	
8	Adjusting Nut	Iron	100-02-100-310	1	
9	Retainer Fasteners	3/8-16X2 1/2 Carriage Bolt	355-00-382-660	2	
		3/8" Lockwasher	355-00-532-660	2	
		3/8-16 Heavy Hex Nut	355-00-583-660	2	
10	Seal Seat Retainer	Iron - Std	470-02-212-310	1	
		Iron - PTFE Seal Only	470-02-312-310	1	
11	Retainer Oring	Viton - #229	360-00-560-850	1	
12	Mechanical Seal Ass'y	Buna / Carbon vs Ni-Resist / Steel-BF871	325-420-0020	1	
		Buna / Carbon vs Ceramic / SS-BF1C1	335-00-180-040	1	
		Viton / Carbon vs Ni-Resist / Steel-XP871	335-00-210-055	1	
		Viton / Carbon vs Ceramic / SS-XP1C1	335-00-180-050	1	
		PTFE	335-492-0001	1	
		-			
13	Driving Ring	Steel	330-00-125-620	1	
		1/4-20X1/4 Cup Point SS Screw	355-00-271-660	1	
12	Adjusting Nut Set Screw	1/4-28X5/16Cone Point SS Screw	355-00-280-660	2	
13	Grease Fitting	1/4-28 45 Deg. Grease Fitting	325-00-100-605	1	
16	Pipe Plug	1/8 NPT Hex Head Plug	390-00-050-605	1	
17	Bracket	Iron	165-02-435-310	1	
		Iron - PTFE Seal Only	165-02-455-310	1	
18	Bracket Bolt	7/16-14X1 Hex Cap Screw GR5	355-00-085-670	8	
19	Bracket Bushing	Bronze	175-02-200-050	1	
		Carbon	2-116-017-880-00	1	
20	Bracket and Bushing Ass'y	Iron / Bronze - Buna or Viton Seal Only	170-03-435-329	1	
		Iron / Carbon - Buna or Viton Seal Only	170-03-435-332	1	
		Iron / Bronze - PTFE Seal Only	170-03-440-329	1	
		Iron / Carbon - PTFE Seal Only	170-03-440-332	1	
21	Bracket Gasket	Standard	245-00-060-240	1	
22	Casing	Iron	190-02-860-310	1	
23	Rotor and Shaft Ass'y	Iron / Steel	455-03-602-349	1	
		Ductalloy / Steel	455-03-602-139	1	
24	Idler Gear	Iron	2-421-200-100-50	1	
25	Idler Bushing	Bronze	2-116-016-454-04	1	
		Carbon	2-116-018-880-04	1	
26	Idler and Bushing Ass'y	Iron / Bronze	285-03-280-330	1	
		Iron / Carbon	285-03-280-332	1	
27	Head Gasket	Standard	245-00-060-240	3	
28	Idler Pin	Steel - Greasable	295-00-190-690	1	
		Steel - Non-Greasable	295-00-200-690	1	
		Nitralloy - Greasable	2-436-007-321-00	1	
		Nitralloy - Non-Greasable	295-00-200-400	1	
29	Head	Plain	265-02-460-310	1	
		Relief Valve	265-02-470-310	1	
30	Head and Idler Pin Ass'y	Plain / Steel Greasable	270-03-460-350	1	
		Plain / Steel non-Greasable	270-03-465-350	1	
		Relief Valve / Steel Greasable	270-03-470-350	1	
		Relief Valve / Steel Non-Greasable	270-03-475-350	1	
31	Head Bolt	7/16-14X1 Hex Cap Screw GR5	355-00-085-670	7	
32	Grease Fitting	1/8NPT Straight w/cap Grease Fitting	325-00-050-605	2	