

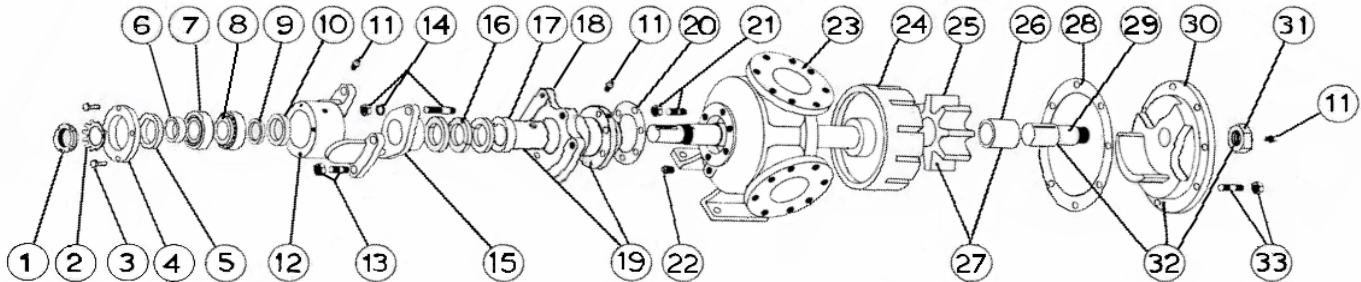
VIKING HEAVY DUTY JACKETED UNMOUNTED PUMP

BULLETIN: EVD-Q260P-V
PAGE: 1
EFFECTIVE: %420%

MODEL Q-260 with Packing

Subject to change without notice
 F.O.B. Factory

Supercedes all previous parts lists



ITEM	DESCRIPTION	MATERIAL	PART NUMBER	QTY	PRICE
1	Locknut	Locknut N11	355-00-560-605	1	
2	Lockwasher	Lockwasher W11	355-00-552-605	1	
3	Bearing Cap Fasteners	Steel - 3/8-16x1 Hex Cap Screw Grade 5	355-00-065-670	4	
4	Bearing Cap	Iron	180-02-100-310	1	
5	Outer Lip Seal	Buna	195-00-325-120	1	
6	Bearing Spacer	Steel	490-00-150-605	1	
7	Ball Bearing Cup	Steel - 66461	150-00-275-605	2	
8	Ball Bearing Cone	Steel - 66225	150-00-300-605	2	
9	Inner Bearing Spacer	Steel	490-00-125-605	1	
10	Inner Lip Seal	Buna	195-00-300-120	1	
11	Grease Fitting	1/8 NPT Straight Grease Fitting	325-00-025-605	3	
12	Bearing Housing	Iron	140-02-200-310	1	
13	Bearing Housing Fasteners	Steel - 5/8-11x1 1/2 Hex Cap Screw Grade 5	355-00-143-670	4	
14	Packing Gland Fasteners	Steel - 5/8-11x3 1/2 Tap 11/16 N2 Stud	355-00-461-620	2	
		Steel - 5/8 Lockwasher	355-00-541-660	2	
		Steel - 5/8 Heavy Hex Nut	355-00-601-660	2	
15	Packing Gland	Iron	2-525-014-100-00	1	
16	Packing Set	Standard - Up To 500 Deg F - C1065	365-00-800-780	1	
		Food Grade - Not Certified - C1045	365-00-800-751	1	
		High Temperature - 1625GF	365-00-800-280	1	
17	RBS Bushing	Bronze	175-02-250-050	1	
		Carbon	2-126-008-880-03	1	
18	Rotor Bearing Sleeve (RBS)	Iron - Non Jacketed	2-587-002-100-00	1	
		Iron - Jacketed	445-02-130-310	1	
19	RBS and Bushing Assembly	Iron / Bronze - Non-Jacketed	450-03-120-330	1	
		Iron / Carbon - Non-Jacketed	450-03-120-332	1	
		Iron / Bronze - Jacketed	450-03-130-330	1	
		Iron / Carbon - Jacketed	450-03-130-332	1	
20	RBS Gaskets	Standard	245-00-120-240	1	
21	RBS Fasteners	Steel - 5/8-11x2 1/4 Hex Cap Screw Grade 5	355-00-152-670	6	
22	Pipe Plug	Steel - 1/4-18 Hex Head Plug	390-00-125-605	3	
23	Casing	Iron - Jacketed	190-02-885-310	1	
24	Rotor and Shaft Ass'y	Iron / Steel	455-03-710-349	1	
		Ductalloy / Steel	455-03-710-139	1	
25	Idler	Iron	2-422-001-100-70	1	
26	Idler Bushing	Bronze	2-129-007-454-05	1	
		Carbon	2-129-009-880-05	1	
27	Idler and Bushing ass'y	Iron / Bronze	285-03-320-330	1	
		Iron / Carbon	285-03-320-332	1	
28	Head Gasket	Standard	245-00-070-240	3	
29	Idler Pin	Steel - Greasable	295-00-230-690	1	
		Steel - Non-Greasable	295-00-240-690	1	
30	Head	Iron - Relief Valve - Non Jacketed	265-02-540-310	1	
		Iron - Plain Head - Jacketed	265-02-550-310	1	
32	Idler Pin Nut	Steel	355-00-625-660	1	
31	Head and Idler Pin Ass'y	Iron - Relief Valve / Steel - Greasable	270-03-540-350	1	
		Iron - Relief Valve / Steel - Non-Greasable	270-03-545-350	1	
		Iron - Jacketed Plain Head / Steel - Greasable	270-03-550-350	1	
		Iron - Jacketed Plain Head / Steel - Non-Greasable	270-03-555-350	1	
33	Head Fasteners	Steel - 5/8-11X1 1/2 Hex Cap Screw G5	355-00-143-670	8	
*	Pedestal - Not Shown	Iron	375-02-050-310	1	